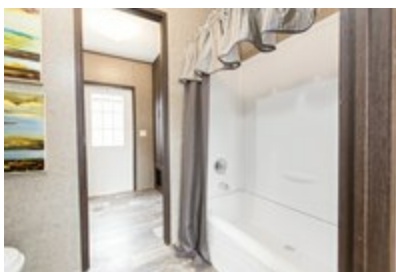


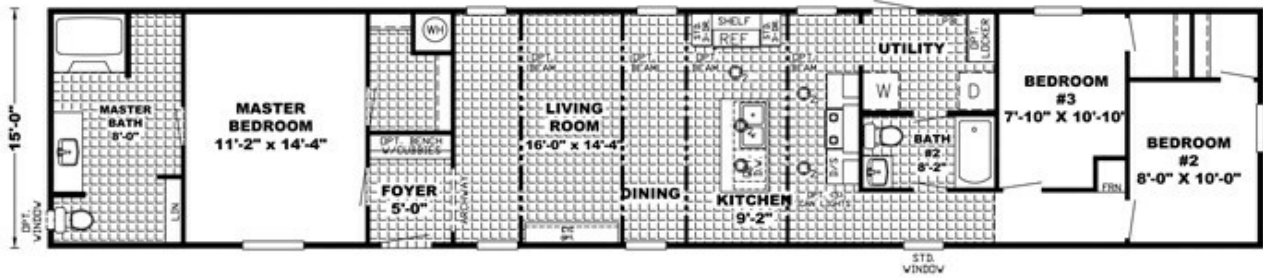


## The Parkside



**The Parkside** Floor plan number: RUS071839AL

**3 beds • 2 baths • 1216 sq.ft. • 16' width • 76' depth**



Our home building facilities invest in continuous product and process improvements. Plans, dimensions, features, materials, specifications and availability are subject to change without notice or obligation. Renderings and floor plans are representative likenesses of our homes and may differ from the actual homes. We invite you to tour a Home Center near you and inspect the highest value in quality housing available or call (205) 384-1446 to speak with a Home Consultant. Copyright 2017, CMH. All rights reserved.

## CLAYTON HOMES-JASPER

13140 HIGHWAY 78  
 JASPER, AL 35501

Monday - Thursday: 9am - 6pm  
 Friday: 9am - 5pm  
 Saturday: 9am - 5pm  
 Sunday: Closed

(205) 384-1446